

# C Series

INDUSTRIAL SECTIONAL DOOR OPERATOR

C25, C35

### C25/35 Features

The C25/C35 motor drive unit features an integrated design combining a servo motor and worm gear reducer, offering a compact structure and lightweight construction. Easy to install – the simplified mounting design allows quick and secure installation on the door shaft. Equipped with a auto/manual gear switching mechanism, providing enhanced operational safety and convenience during manual operation.

### C25/35 Certifications

#### CE Certificate Standards

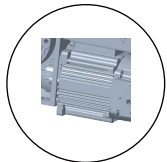
EN 12978:2003+A1:2009, EN 60204-1:2018,  
EN IEC 61000-6-2:2019, EN IEC 61000-6-4:2019

#### Related to CE Directive(s)

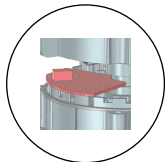
2014/35/EU (Low Voltage)  
2014/30/EU (Electromagnetic Compatibility)



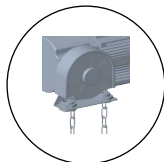
### C25/35 Details



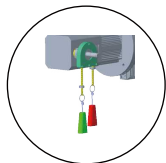
Rare-Earth Permanent Magnet Motor



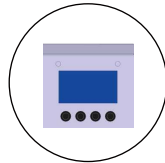
Electronic Limit with Absolute Encoder



Emergency Manual Operating Device



Auto/Manual Gear Switching Device



3-Inch LCD Screen with Four Function Keys

### C25/C35 Motor Parameters



Model	C25	C35
Motor Type	Servo Motor (PMSM)	Servo Motor (PMSM)
Working System	S3	S3
Motor Power (W)	300	400
Power Supply (V)	1N-220V±10%	1N-220V±10%
Frequency (Hz)	50/60	50/60
Current (A)	3.5	4
Output Speed (rpm) <sup>1)</sup>	10-50	10-50
Output Torque	25	35
Door Weight (kg) <sup>2)</sup>	240	320
Motor IP Level	54	54
Working Environment (°C)	-20~+50	-20~+50
Hollow Shaft (mm)	25.4	25.4
Incremental Encoder	✓	✓
Absolute Encoder (Built-in)	✓	✓
Hand Chain Length (m)	3	4
Cable Length (m)	4	5
Recommended Cycles Per Hour	10	10
Weight (kg)	5.5	6.1
Dimension (mm)	275.3 x 142.15 x 118.95	275.3 x 142.15 x 118.95

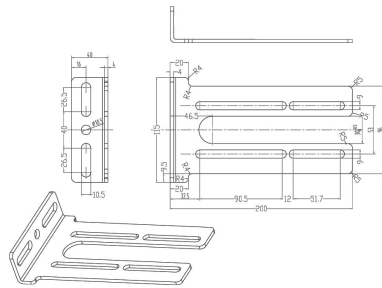
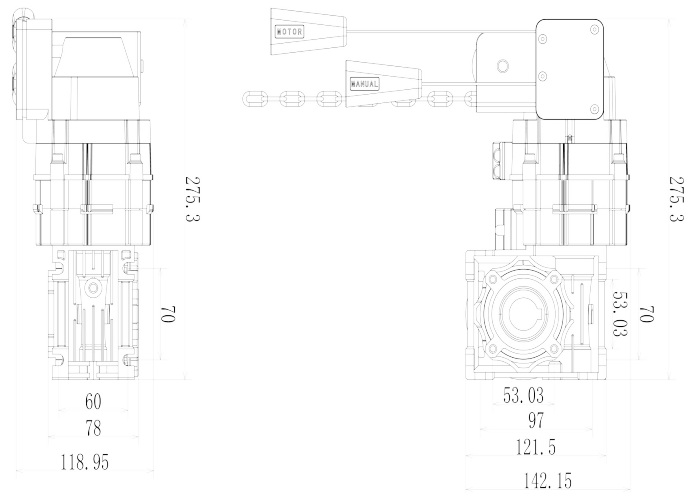
#### Value marked in color indicate customizable options.

- (1) Factory default speed: 26 rpm; Maximum speed at rated power: 40 rpm;
- (2) The weight of door per square meter is calculated as 16kg/m<sup>2</sup> (This value is for reference only due to the excessive variables in the sectional door counterweight system. )

**Notes**


- A safety margin is included in the Recommended Cycles per Hour to help extend the service life of the motor.
- Sectional doors equipped with a balancing system require regular inspection and rebalancing of the springs.
- If the controller displays a sudden increase in torque, the counterbalance system may require immediate adjustment.
- The opening and closing speeds may also vary depending on the door structure and configuration.

**C25/C35 Motor Dimension Drawing**



C25/C35 Mounting Bracket Dimension

**DW6/DW7 Controller Specifications**

		
Model	DW6	DW7
Matching Motor Models	C25, C35	C25, C35
Dimension (mm)	General: 190 x 300 x 138.5 Slim: 123 x 303 x 142	General: 190 x 300 x 138.5 Slim: 123 x 303 x 142
Display	3-inch LCD screen (4 lines of text display)	3-inch LCD screen (4 lines of text display)
Ip Level	IP54	IP54
Soft Start And Soft Stop	✓	✓
Self Inspection	✓	✓
Maintenance Reminder	✓	✓
Resistance Rebound/stop	✓	✓
Operating Modes	Auto/Jog/Hand Chain	Auto/Jog/Hand Chain
Door Running Speed Settling	Stepless Speed Regulation	Stepless Speed Regulation
Deceleration Interval Setting	✓	✓
Automatic Closing Delay (s)	1-240	1-240
Safty Height Setting	✓	✓
Operation Status Display	Torque/Speed/Position	Torque/Speed/Position
Error Report	✓	✓
Fault Memory	✓	✓
Input Port Status Query	✓	✓
Automatic Antifreeze Operation	✓	✓
Contact Type (NC/NO)	✓	✓
Open/Close/Stop Input	✓	✓
Emergency Stop Input	✓	✓
Pedestrian Door	✓	✓
Safety Protection Signal Input	Reverse / Stop	Reverse / Stop
Programmable Relay Output	2 Groups	2 Groups (Can be expanded to 4 groups)
General Port	1 Group	4 Groups
Peripheral Power Port	12V*1	12V*3
Remote Control	✓	✓
RS485	✗	✓
Weight (kg)	General: 1.8 Slim: 1.1	General: 1.8 Slim: 1.1